

# Outdoor WIFI MINO Antenna

**MODEL: WM-62L**



## 1.. GENERAL DESCRIPTION

Model No	P/N
WM-62L	WM-62L

Below is a table summarizing the antenna design specification.

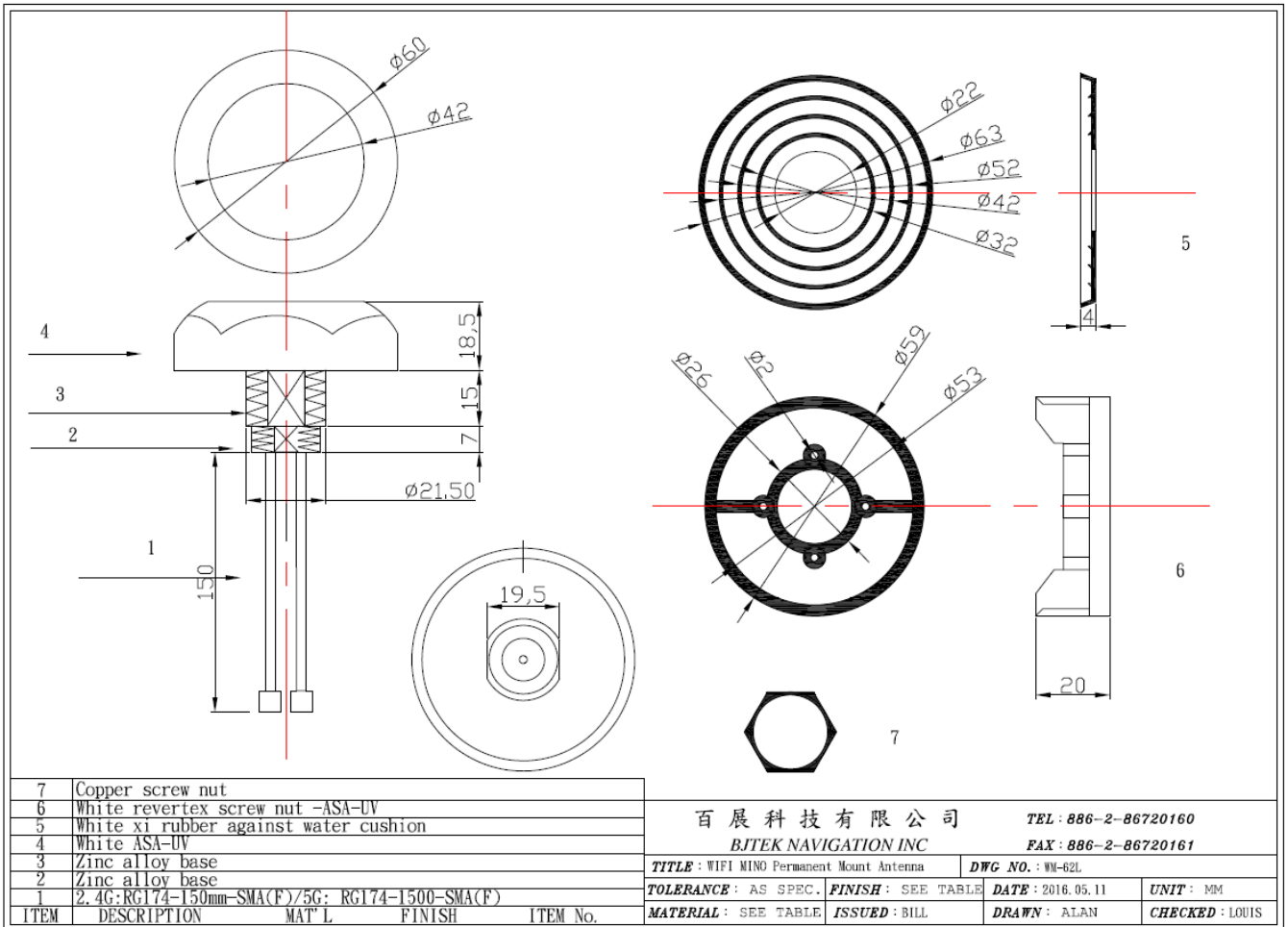
### 1.1 Electrical Properties

Parameter	Description
Frequency Band	Cable 1: 2.4~2.5Ghz (R.H.C.P. ) Cable 2 : 5.1~5.85GHz ( Linear )
Nominal Impedance	50 ohm
Polarization	Vertical
Admitted Power radiation	5W
V.S.W.R	2.5:1
Antenna Peak Gain	2.4~2.5G: 3 dbi 5.1-5.85G : 3 dbi
Note: Gain includes the cable loss	

### 1.2 Mechanical Properties

Parameter	Description
Antenna Type	External Antenna
Material	ASA-UV
Touch Type	Screw Type
Cable & Connector	RG174-150mm-SMA (F) x 2

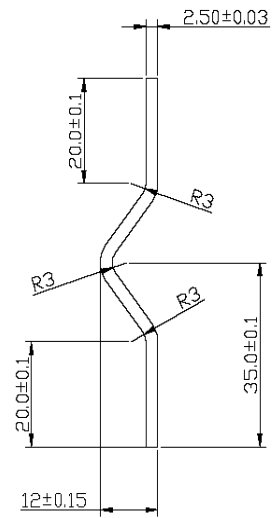
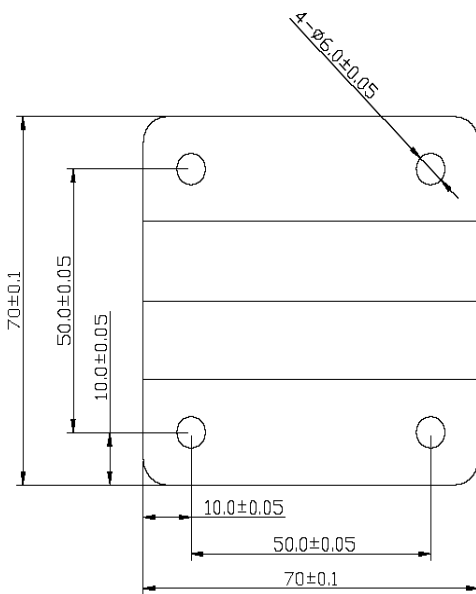
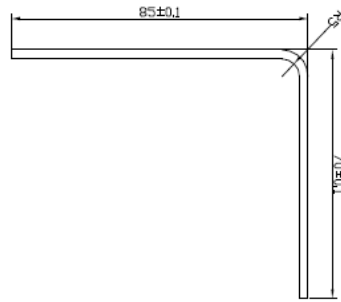
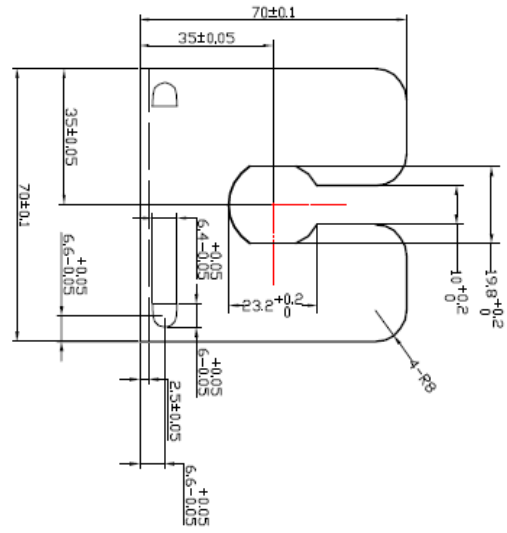
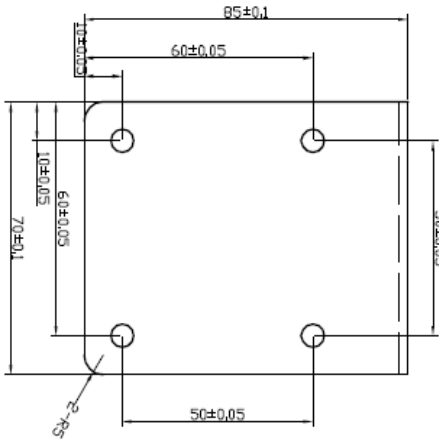
Antenna Dimensions	60mm(Dia.) x 18.5mm(H)
Mounting	FB6 SUS L-Mounting
Antenna Color	White
Operating Temperature Range	-40°C~+80°C
Storage Temperature Range	-40°C~+80°C
Waterproof	IPX7



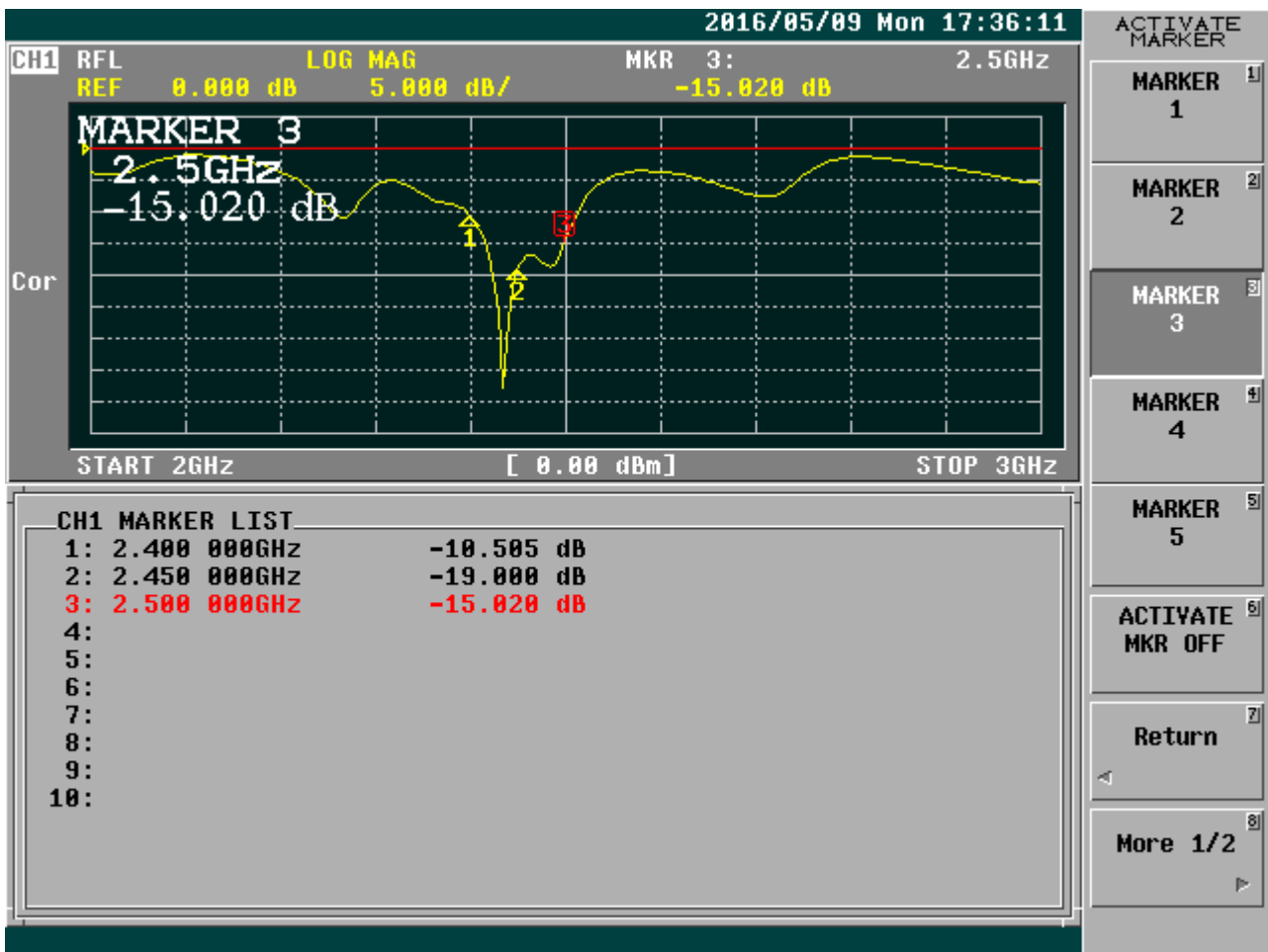
## SUS L-Mounting : Madel : FB-6

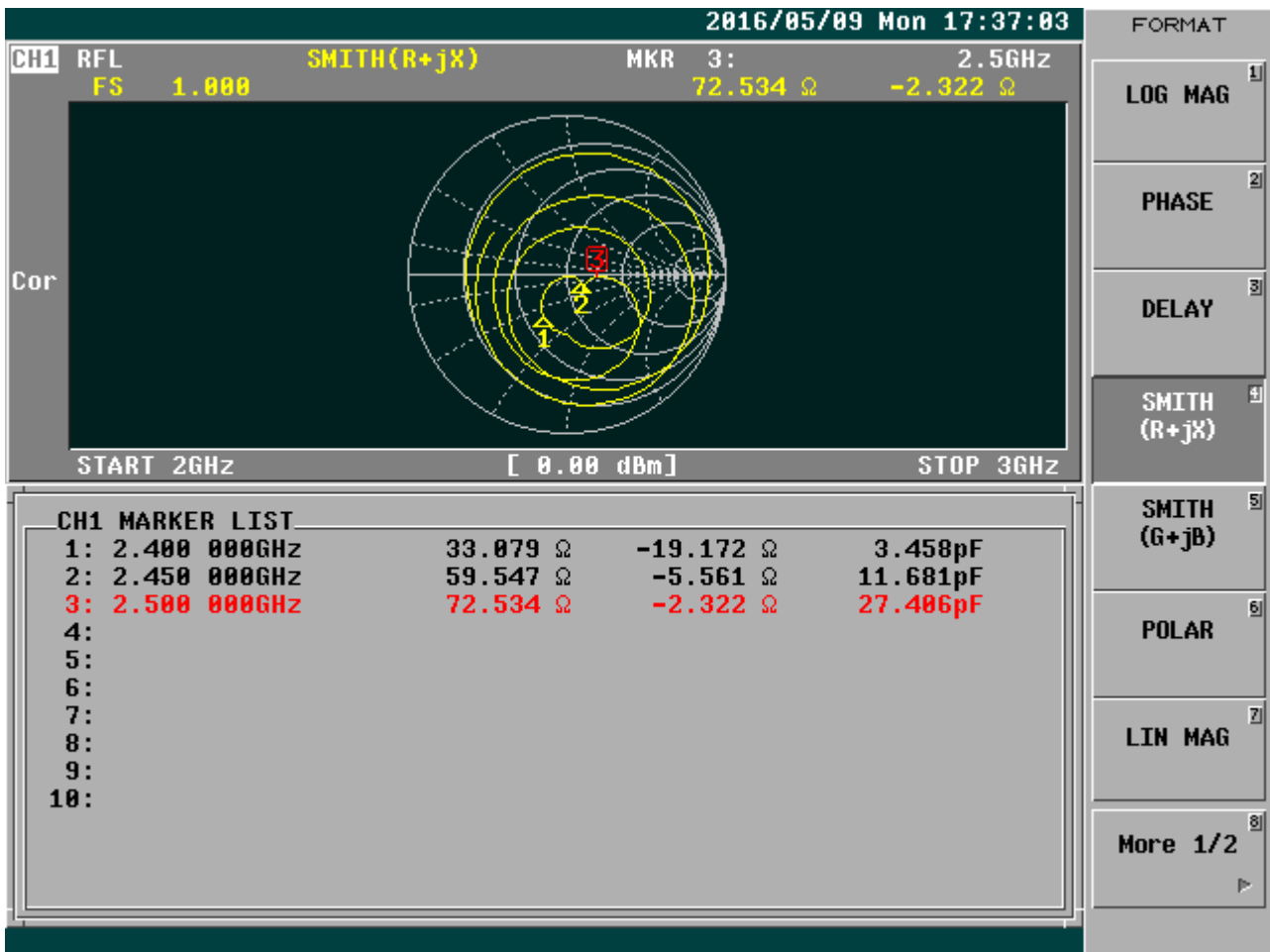
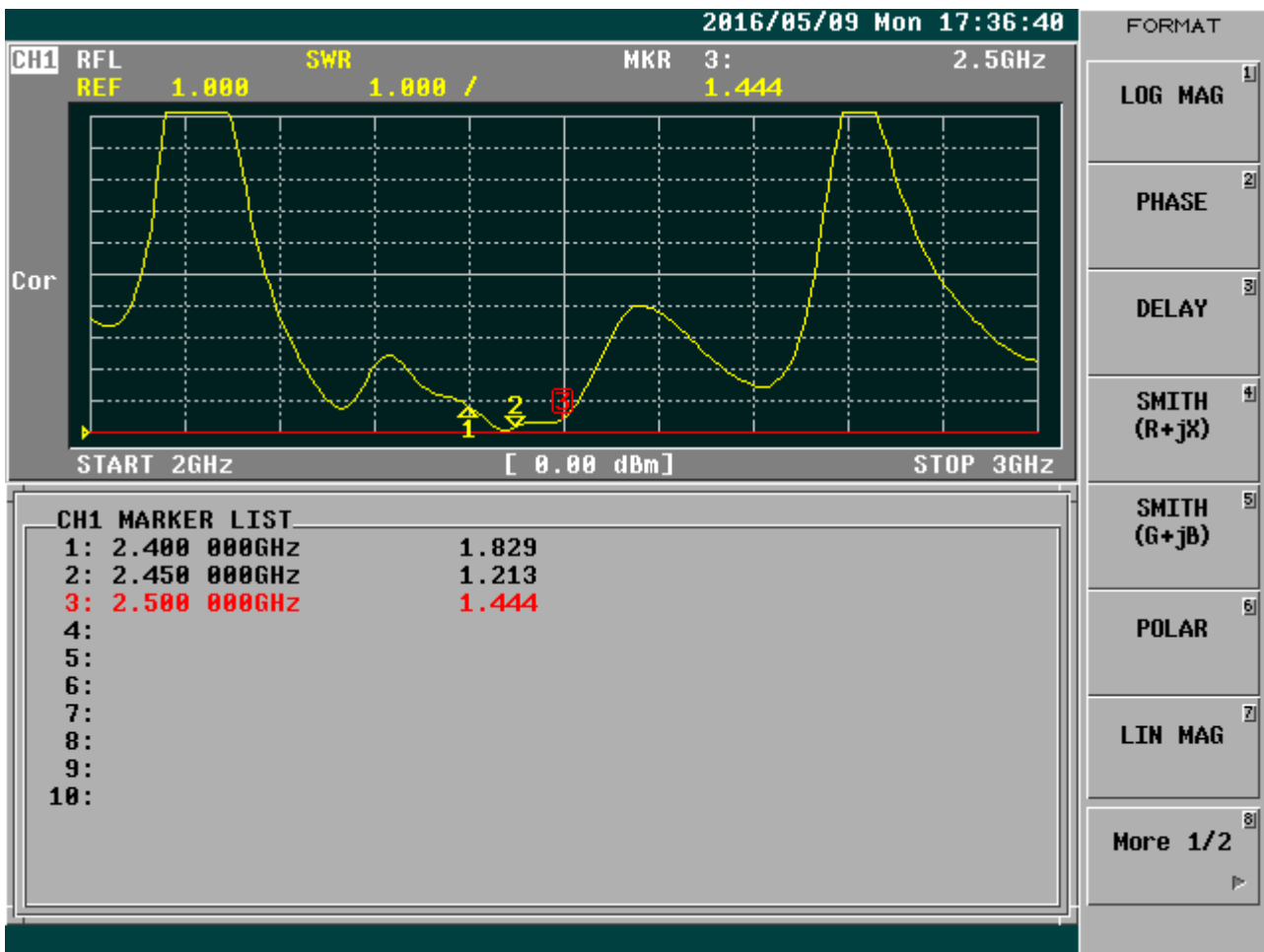


Size :

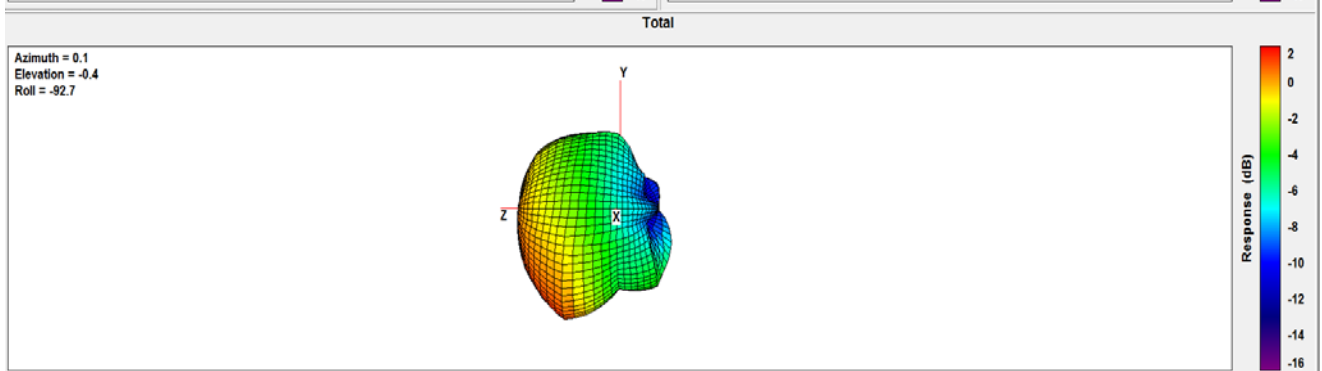
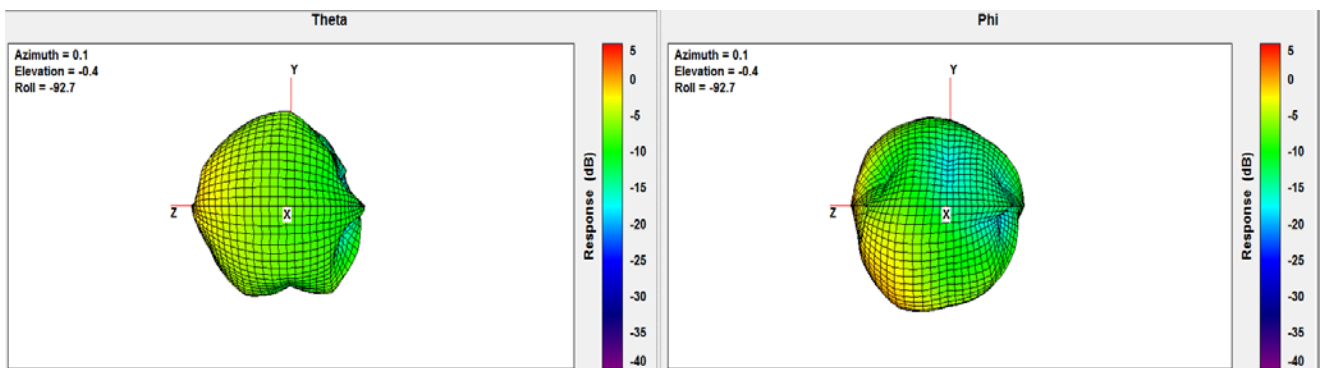
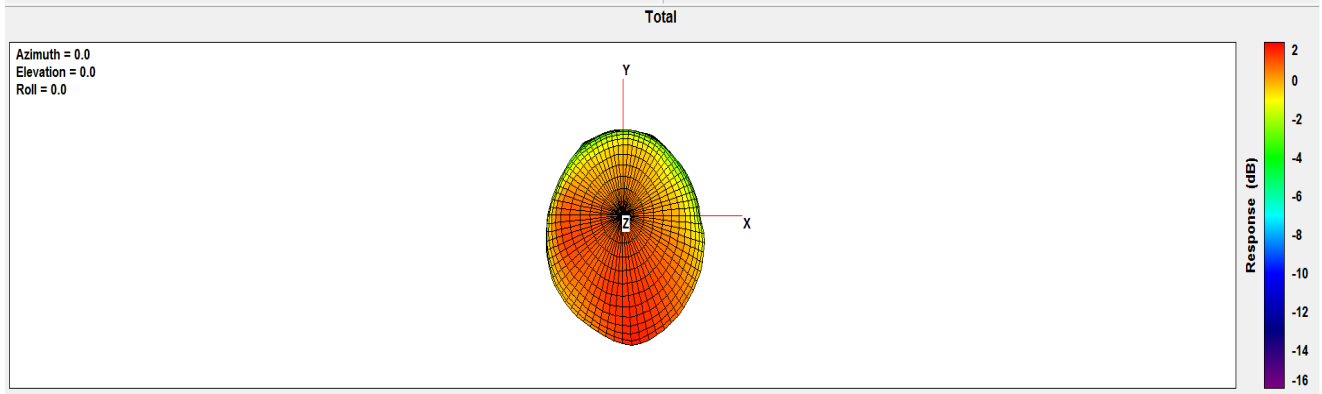
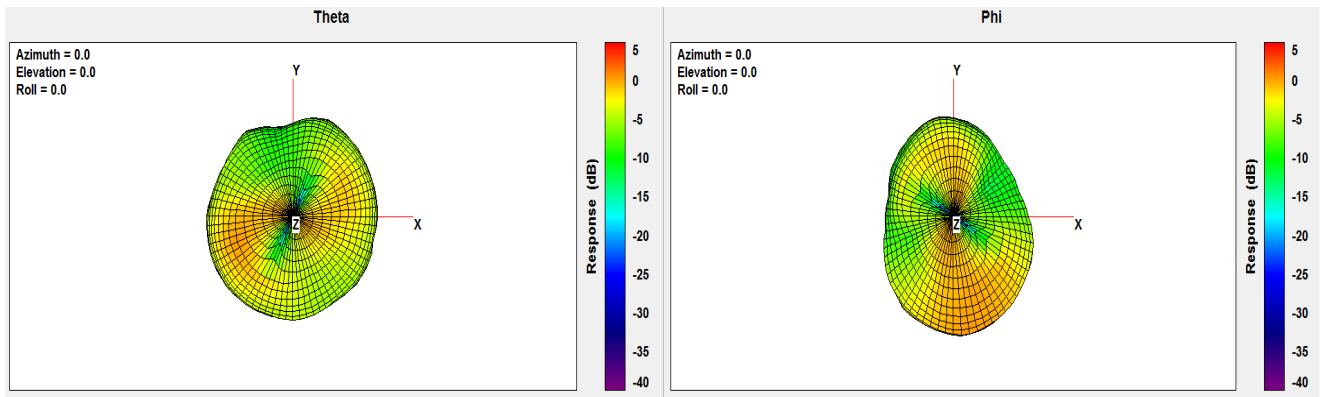


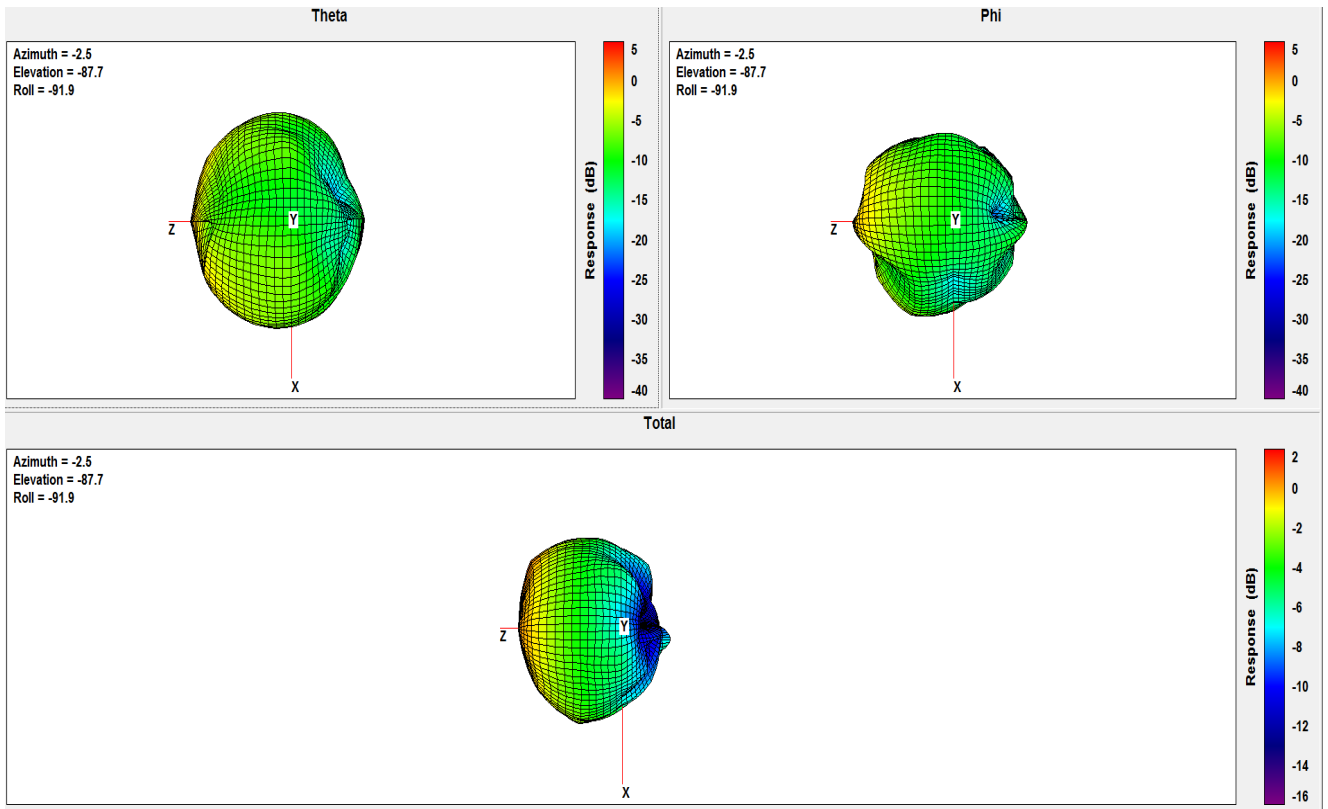
Cable 1 : 2.4~2.5G Test :





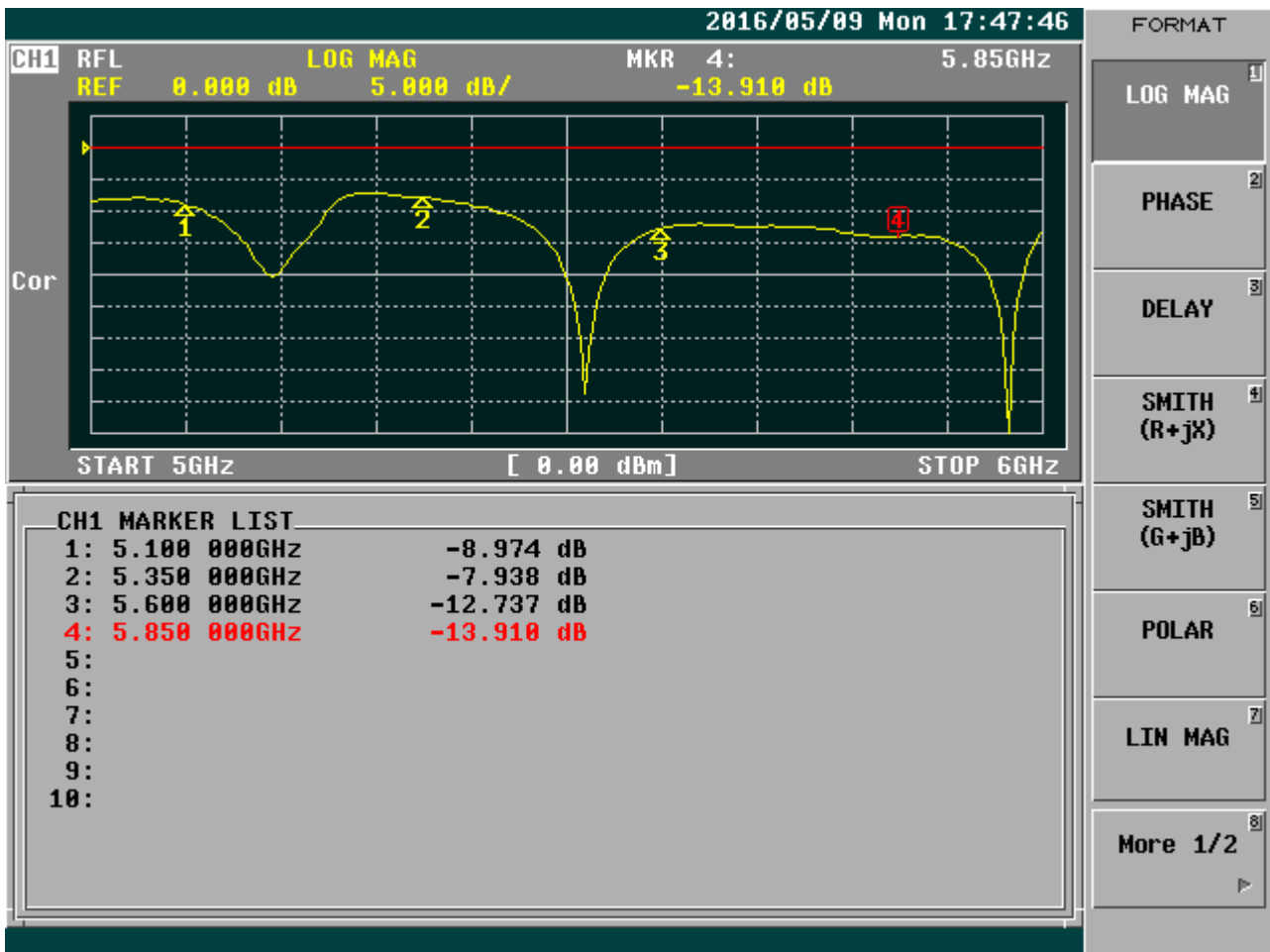
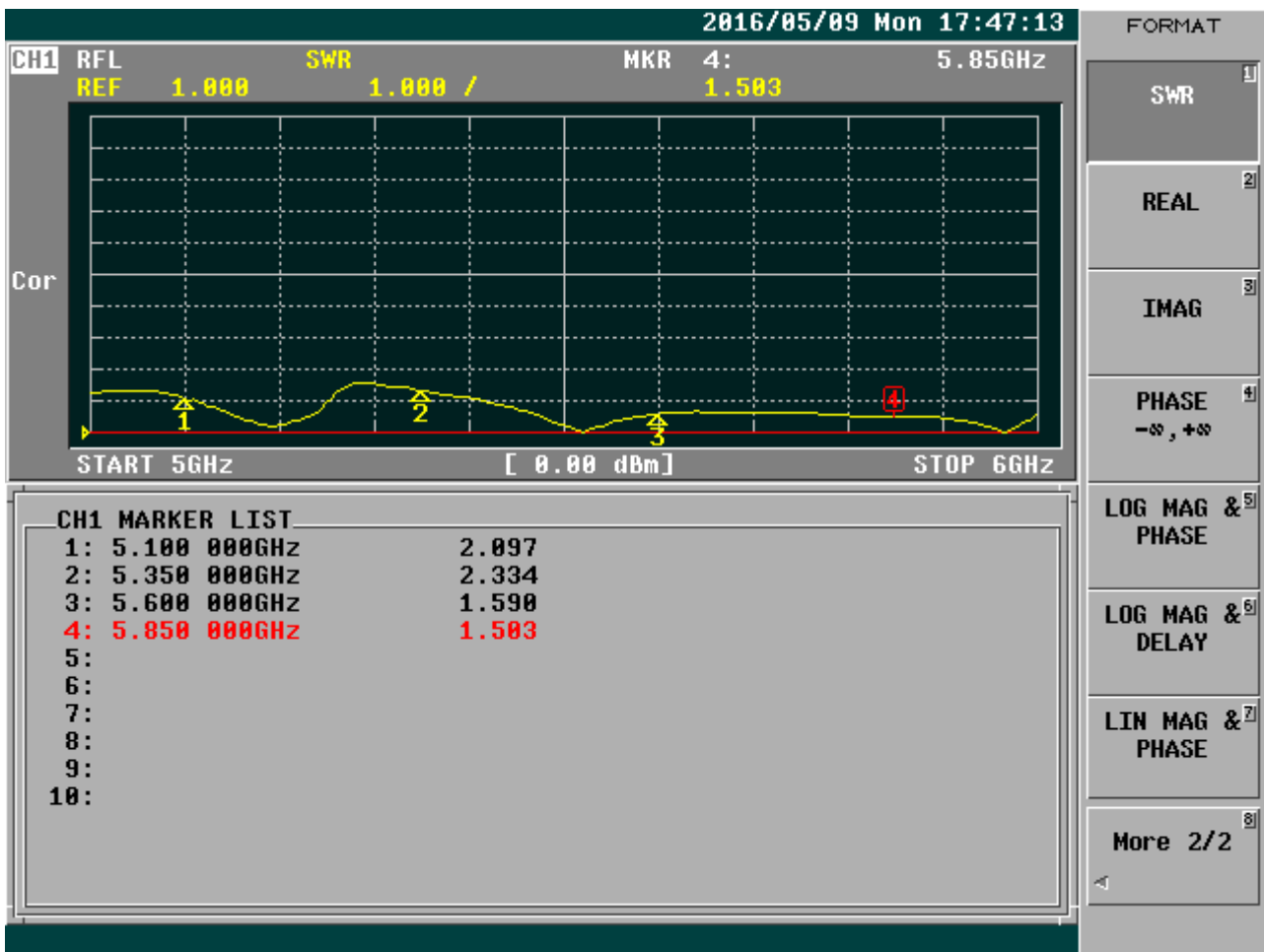
Frequency (MHz)	2400	2417	2427	2432	2450	2457	2467	2472	2500		
Peak Gain (dBi)	1.82	2.25	2.57	2.69	3.14	3.36	3.51	3.60	3.25		
Efficiency (%)	42.51	46.62	49.22	49.53	54.45	56.90	59.49	61.26	59.20		



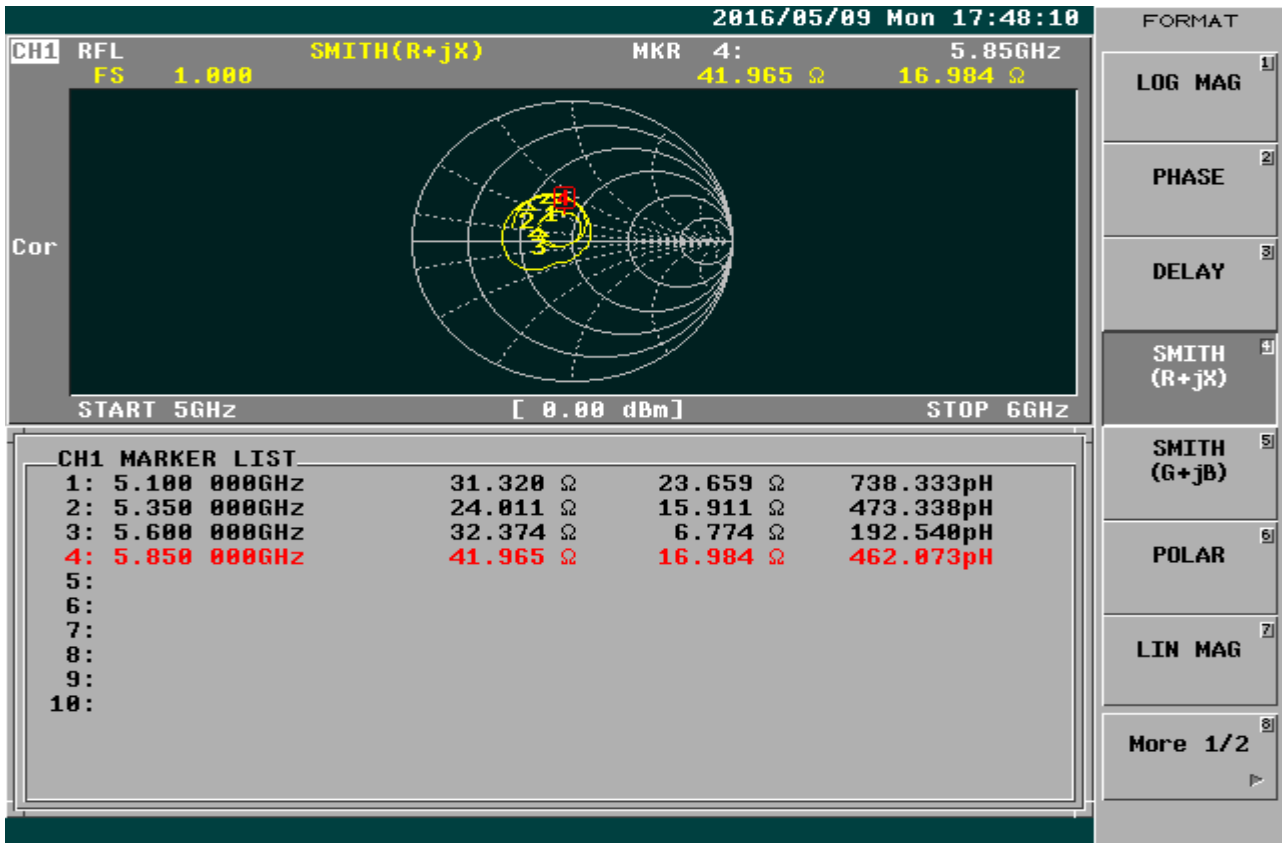


Cable 2 : 5.1~5.85G Test :









Frequency (MHz)	5150	5350	5470	5750	5850						
Peak Gain (dBi)	3.74	2.80	3.89	2.51	2.56						
Efficiency (%)	51.80	43.19	53.93	55.67	54.43						

